

ICEMS'2003

**PROCEEDINGS OF THE SIXTH
INTERNATIONAL CONFERENCE ON
ELECTRICAL MACHINES AND
SYSTEMS**

November 9-11, 2003, Beijing, China

Volume II

Edited by

Fangquan Rao Guobiao Gu

**INTERNATIONAL ACADEMIC PUBLISHERS
WORLD PUBLISHING CORPORATION**

X. Field Analysis and Computation

ANALYSIS OF 3D THERMAL FIELD AND DEFORMATION IN THE STATOR OF LARGE HYDRO-GENERATORS	
<i>Ruoping Yao, Fangquan Rao</i>	714
A NEW COUPLED FIELD-CIRCUIT APPROACH TO CALCULATE EQUIVALENT CIRCUIT PARAMETERS OF THE INDUCTION MOTOR	
<i>Changhong Liu, Ruoping Yao</i>	717
ANALYSIS OF TRANSIENT STATE OF THE SQUIRREL CAGE INDUCTION MOTOR BY USING MAGNETIC EQUIVALENT CIRCUIT METHOD	
<i>Jong-Ho Jeong, Eun-Woong Lee, Hyun-Kil Cho</i>	720
3D FINITE ELEMENT COMPUTATION COMBINED WITH NEURAL NETWORKS PREDICTION OF EDDY CURRENT AND TEMPERATURE DISTRIBUTION IN TFIH EQUIPMENTS	
<i>Xiaoguang Yang, Youhua Wang, Fugui Liu, Weili Yan</i>	724
TIME-STEPPING ANALYSIS OF A SWITCHED RELUCTANCE MOTOR BY COUPLING ELECTRICAL CIRCUIT AND ELECTROMAGNETIC FINITE ELEMENT METHODS	
<i>Wei Wu, Bruce A. Kalan, Howard C. Lovatt</i>	728
ROBUST MESH REGENERATION BASED ON STRUCTURAL DEFORMATION ANALYSIS FOR 3D SHAPE OPTIMIZATION OF ELECTROMAGNETIC DEVICES	
<i>Yingying Yao, Chang Seop Koh, Dexin Xie</i>	732
IRON LOSS ANALYSIS METHOD CONSIDERING HARMONICS OF MAGNETIC FLUX DENSITY WAVEFORMS	
<i>Hyuk Nam, Jeong-Jong Lee, Ki-Chan Chang, Jung-Pyo Hong</i>	736
ANALYSIS METHOD USING EQUIVALENT CIRCUIT CONSIDERING HARMONIC COMPONENTS OF POLE CHANGE MOTOR	
<i>Hyuk Nam, Young-Kyoun Kim, Seung-Kyu Jung, Jung-Pyo Hong</i>	740
FINITE ELEMENT ANALYSIS OF 3-PHASE INDUCTION MOTOR WITH PWM INVERTER	
<i>Jeong-Jong Lee, Hyuk Nam, Young-Kyon Kim, Jung-Pyo Hong, Don-Ha Hwang</i>	744
FINITE ELEMENT ANALYSIS ON TORQUE FLUCTUATION OF PMDC MOTORS INDUCED BY COGGING AND COMMUTATION	
<i>Ruifang Liu, Dengjun Yan, Minqiang Hu</i>	747
ELECTROMAGNETIC FIELD ANALYSIS USING THE POINT COLLOCATION METHOD BASED ON THE FMLSRK APPROXIMATION	
<i>H.K. Kim, K.Y. Park, D.W. Kim, Y.S. Kim, S.K. Park, B.H. Lee</i>	751
FE ANALYSIS OF HYBRID STEPPING MOTOR (HSM)	
<i>Kibong Jang, Junbo Yun, Ju Lee</i>	754

Analysis Method Using Equivalent Circuit Considering Harmonic Components of Pole Change Motor

Hyuk NAM, Young-Kyoun KIM, Seung-Kyu JUNG, and Jung-Pyo HONG, *Senior Member, IEEE*

Dept. of Electrical Eng., Changwon Nat'l Univ., #9 Sarim-dong, Changwon, Gyeongnam, 641-773, Korea

Phone: 82-55-2625966 Fax: 82-55-2639956 E-mail: haeggee@korea.com Website: <http://ecad.eecu.net>

Abstract-This paper deals with the method of the characteristic analysis of the capacitor-run single-phase induction motor has two poles (4-pole and 2-pole). This motor, which is called pole change motor in this paper, is capable of variable speed operation without inverters or drives. However, speed-torque curve can be distorted by the harmonic components contained in the magnetic flux density distribution. Therefore, the characteristics of this motor are analyzed using equivalent circuit considering harmonic components and the simulation results are compared with the experimental results.

I. INTRODUCTION

The capacitor-run single-phase induction motor is widely used in household appliances. The major reason is that the operation of the motor is fed directly from the commercial single-phase voltage source without any type of control strategy. The pole change motor is the capacitor-run single-phase induction motor that has two poles (4-pole and 2-pole). Therefore, this motor is capable of variable speed operation and can expand the constant torque range using the pole change technique. In addition, it is maintenance-free and cheap in comparison with the motors such as the 3-phase inverter motor and the brushless DC motor, because it uses pole change switch for changing the speed without inverters or drives.

This paper deals with the pole change motor composed of the main winding, the auxiliary winding and the compensation winding. The main and the auxiliary windings are used for the 4-pole, because this motor is started at 4-pole. When the 4-pole is changed into the 2-pole for the 2-pole operation, the auxiliary winding is disconnected and the winding pattern of the main winding is changed.

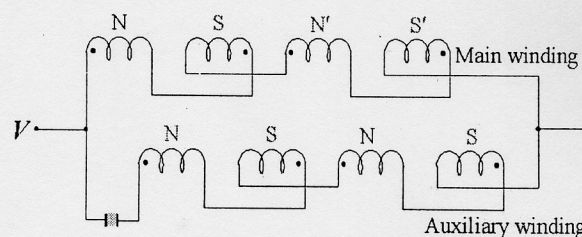
The magnetic flux density distribution by only the main winding can result in severe distortion caused by harmonic components. The existence of harmonics is well known to have a significant detrimental effect on the characteristics of the machine such as crawling [1]. To compensate the magnetic flux density and the torque such as negative torque, the compensation winding is connected parallel with the main winding at the 2-pole operation. In spite of the compensation winding, speed-torque curve is distorted by the harmonics such as the 3rd, 5th order. Therefore, it is very important to calculate the accurate magnetic flux density and harmonics.

The magnetic flux density distribution in the air gap and the harmonic components are calculated by analytical methods in this paper. Discrete Fourier Transform (DFT) is

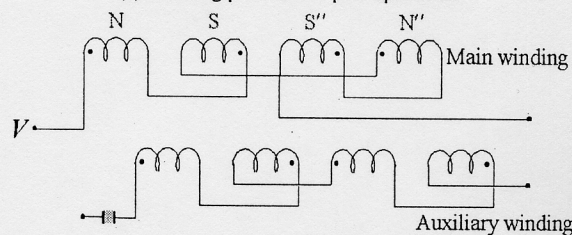
used to analyze the harmonics. The characteristics of pole change motor are analyzed from equivalent circuit considering the harmonic components. The simulation results by the proposed analysis method are compared with the experimental results.

II. POLE CHANGE METHOD

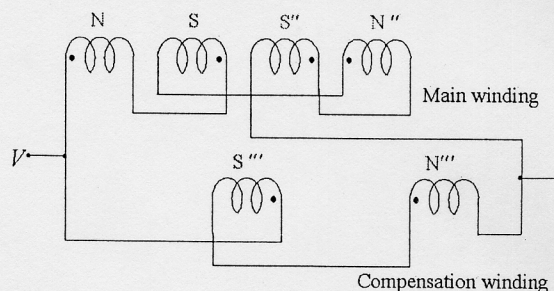
Fig. 1 shows the winding patterns at 4-pole operation and 2-pole operation according to the existence of compensation winding. Pole N', pole S' of the main winding in Fig. 1(a) are changed into pole S'', pole N'' in Fig 1(b), respectively. The auxiliary winding is disconnected, as the pole change motor is started at 4-pole. The compensation winding is connected parallel with the main winding instead of auxiliary winding in Fig. 1(c).



(a) Winding pattern at 4-pole operation.



(b) Winding pattern by only main winding at 4-pole operation.



(c) Winding pattern by main and compensation windings at 4-pole operation.

Fig. 1. Winding pattern according to the pole number.

Fig. 2 shows the magnetic flux density distribution by Finite Element Method (FEM), Discrete Fourier Transformation (DFT) of the magnetic flux density distribution and the speed-torque curves obtained from the experimental results according to the existence of compensation winding. The magnetic flux density distributions in Fig. 2(a) are obtained by FEM at no load condition.

The unbalanced 6-pole of N-S-N-S-N-S per 1 cycle occurs by harmonic components such as 3rd, 5th order at the 2-pole operation with only main winding in Fig. 1(a), (b). As the results, the speed-torque curve is distorted in Fig. 2(c). In addition, the 3rd order harmonic component synchronizes the speed near 1,200 rpm and generates the negative torque is larger than the positive torque.

Thus, the compensation winding is wound to compensate the magnetic flux density distribution and torque such as negative torque, breakdown torque.

In Fig. 2, the magnetic flux density distribution of 6-pole becomes that of 2-pole by the compensation winding and the harmonic components as well as the negative torque are reduced. In spite of the compensation winding, the distortion of the speed-torque curve can be produced. Therefore, it is very important to calculate the magnetic flux density distribution in the air gap and analyze the characteristics of the pole change motor considering harmonic components.

III. CHARACTERISTIC ANALYSIS METHOD

A. Magnetic Flux Density Distribution Calculation

The flux density distribution in this paper is calculated by analytical method, not FEM. To avoid unnecessary mathematical complexity, certain simplifying assumption is made. The main simplifying condition is the assumption of the infinite relative permeability of iron ($\mu_r = \infty$). It is assumed that the motor consists of two smooth coaxial cylinders made of a magnetic material and the cylinders are separated by the air gap in Fig. 3. The magnetic flux density produced by an arbitrary system of conductors in the air gap is obtained by the superposition of the field densities of the individual conductors. The magnetic flux density $B(\alpha)$ of the individual turns at any point P having the coordinate α is obtained by using equation (1) [2].

$$B(\alpha) = \frac{\mu_0 C_\theta i}{\pi \delta} \sum_{n=1}^{\infty} \frac{1}{n} \sin n(\alpha - \theta) \quad (T) \quad (1)$$

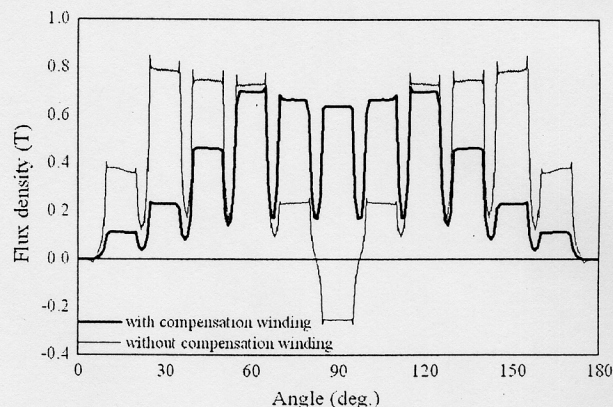
where n is the harmonic order, C_θ is the number of conductors that are placed at the position θ and δ is the magnetic air gap.

B. Discrete Fourier Transformation

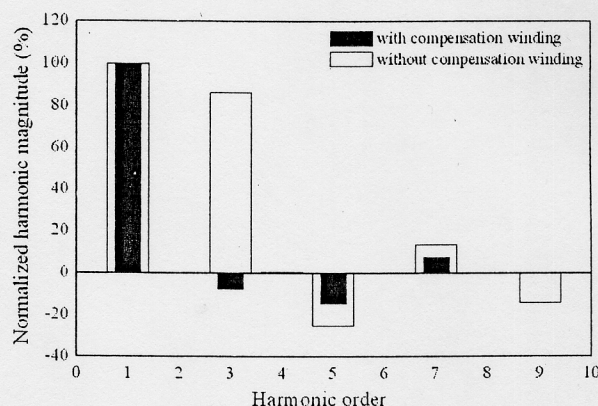
DFT can be expressed as equation (2).

$$a_n = \frac{2}{Num} \sum_{i=0}^{Num} b_i \sin \left(\frac{2\pi ni}{Num} \right) \quad (2)$$

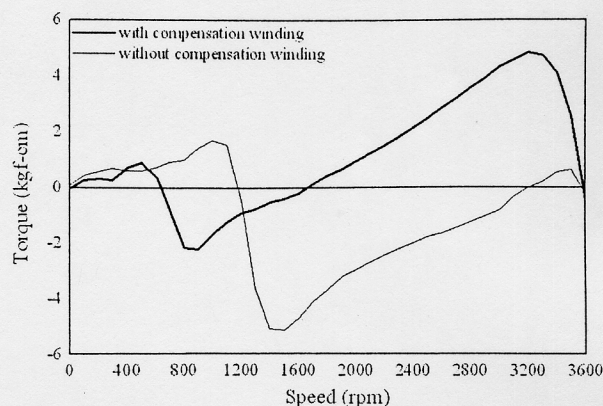
where a_n is the n -th harmonic magnitude of the magnetic flux density, Num is the number of data and b_i is the flux density magnitude at each data. The ratio of the fundamental



(a) Magnetic flux density distributions calculated by FEM.



(b) DFT of the magnetic flux density distribution.



(c) The experimental results of the speed-torque curves.

Fig.2. The characteristic according to the existence of the compensation winding at 2-pole operation.

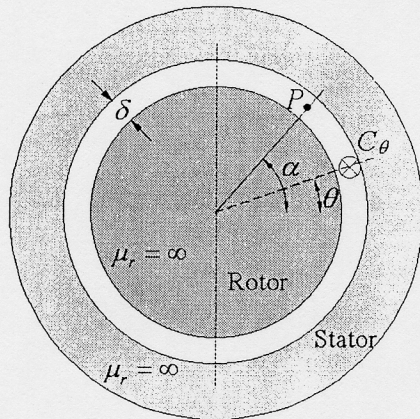


Fig. 3. Illustration relating to the calculation of the field of conductors.

magnitude to the harmonic magnitude a_n/a_1 is used to obtain magnetizing reactance and secondary parameters of the n -th harmonic [3].

C. 2-pole Characteristic Analysis

The pole change motor at the 4-pole operation is analyzed from the equivalent circuit by the symmetrical-component theory in order to consider the elliptical magnetic field [4]. The main and auxiliary windings are designed for the 4-pole and the magnetic flux density distributions almost do not contain the harmonics. Thus, the equivalent circuit is composed of the fundamental component. The overall torque is calculated by the difference of the positive and negative phase sequence torque. On the other hand, the main winding for the 4-pole operation is also use at the 2-pole operation. Therefore, the magnetic flux density distribution with only the main winding can become severely distorted by harmonic components.

Fig. 4, as suggested by Alger and others, shows the equivalent circuit of the main or compensation winding considering the harmonic components for the characteristic analysis at the 2-pole operation. It is a useful concept to visualize the electromagnetic behavior of the various space harmonic as being similar to the behavior of separate motors, with a common stator winding and a common shaft, but with magnetizing reactance and secondary impedances corresponding respectively to the air gap flux wave of each specific harmonic. Therefore, the effect of the various harmonic torques on the fundamental speed-torque curves can be evaluated from the equivalent circuit. The phase quantities V_1 , R_1 , R_2 , X_2 , and X_M of the circuit are identical to those of the standard equivalent circuit. The magnetizing reactance of each of the harmonics, such as X_{M-5} , is based on the component of air gap flux of that particular harmonic. In addition, the slip function of R_{2-n} for each harmonic is set up for the rotor slip for that particular harmonic and is dependent on the order of the harmonic and on whether the harmonic field is positive (or forward) rotating or negative (or backward) rotating [4].

Fig. 5 shows the flow chart for the characteristic analysis at 2-pole operation. The phase of the main and the compensation windings is the same. Therefore, the mutual effect on the two windings must be considered. The total torque can be obtained from superposition of the torques of the main and the compensation windings according to slip.

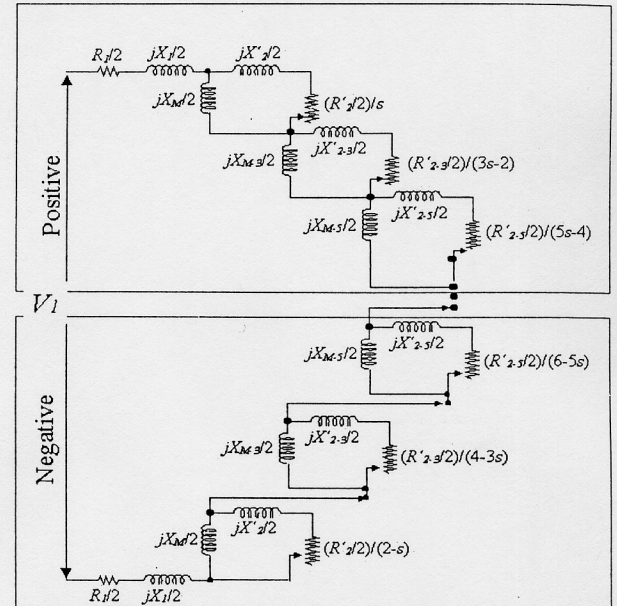


Fig. 4. Equivalent circuit of the main or the compensation winding considering harmonic components.

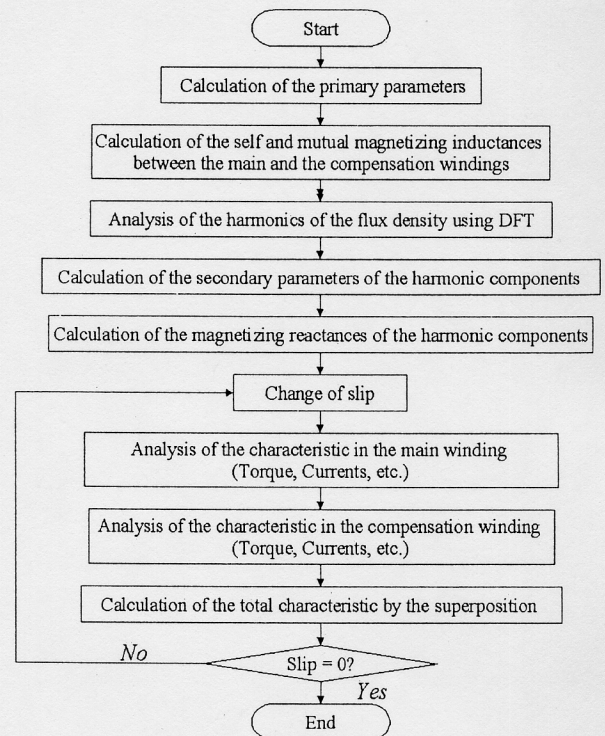


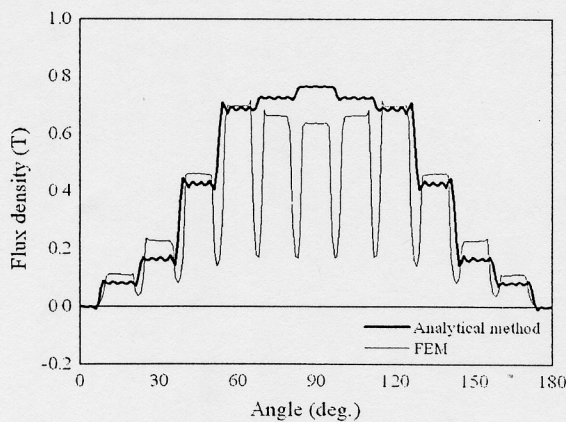
Fig. 5. Flow chart for characteristic analysis at 2-pole

IV. ANALYSIS MODEL AND RESULTS

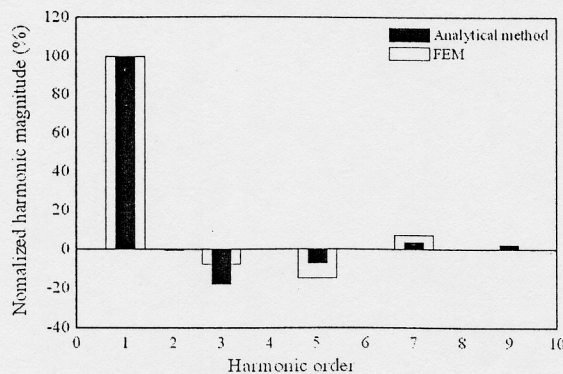
Fig. 6(a) shows the magnetic flux density distribution in the air gap using the analytical method in comparison with the FEM. The effect on the saturation can be considered by the FEM, but not by the analytical method. Therefore, the difference of the harmonic analysis result by two methods occurs as shown in Fig. 6(b) and Table I. These results show that the 3rd order harmonic component is evaluated in large and the 5th order harmonic component is evaluated in small in the analytical method in comparison with the FEM.

Therefore, the speed-torque curve of the analysis model by the experimental result is affected by the 5th order harmonic component, while that of the analysis model by the simulation result is affected by the 3rd order harmonic component than the 5th order harmonic component as shown in Fig 6(c), (d).

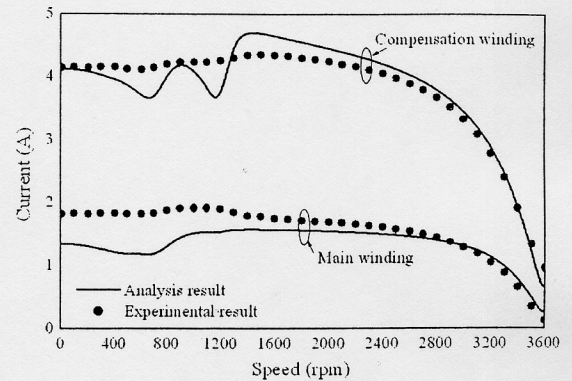
Harmonic order	Analytical method (%)	FEM (%)
1	100.0	100.0
3	-17.6	-7.5
5	-7.3	-14.5
7	4.0	7.5
9	2.3	0.4



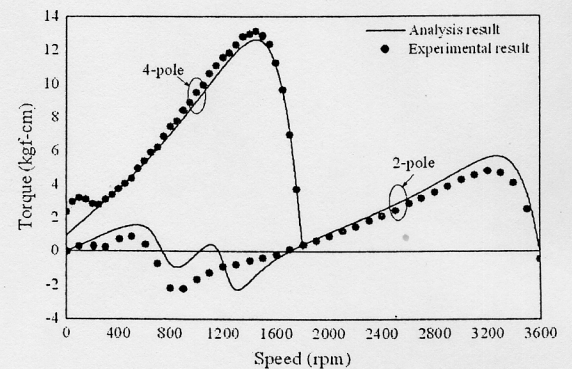
(a) Magnetic flux density distribution.



(b) DFT of the magnetic flux density distribution.



(c) Speed-current curves at 2-pole operation.



(d) Speed-torque curves.

Fig. 6. Characteristics of the analysis model.

V. CONCLUSIONS

This paper proposes the characteristic analysis method by equivalent circuit considering the harmonic components of pole change motor. The harmonic analysis results of the magnetic flux density distribution calculated by analytical method in the air gap are used to calculate the parameters of the harmonic equivalent circuit. From the characteristic analysis results, it is confirmed that the speed-torque curve is distorted by the harmonic components contained in the magnetic flux density distribution and the 3rd, the 5th harmonics, especially, affect the characteristic of the pole change motor. Therefore, there is need to design the windings in order to reduce the harmonics and obtain torques such as pole change torque, breakdown torque in 2-pole operation.

REFERENCES

- [1] H.A. Toliyat, and N. Sargolzaei, "A comprehensive method for transient modeling of single phase induction motors including the space harmonics," *Journal of Electric Machines and Power Systems*, vol. 26, no. 3, pp.221-234, 1998.
- [2] B. Heller and V. Hamata, *Harmonic Field Effects in Induction Machine*, Elsevier Scientific Publishing Company, 1977.
- [3] C. G. Veinott, *Theory and Design of Small Induction Motors*, McGRAW HILL, 1959.
- [4] P. L. Cochran, *Polyphase Induction Motors, Analysis, Design, and Application*, Marcel dekker, 1989.